

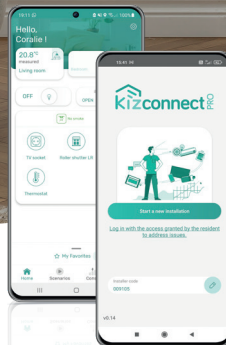
# kizconnect and it all connects!

Connected solutions

Customizable

Multi-compatible

Scalable



**With expertise in Smart Homes and Smart Buildings**, Overkiz is an expert in the entire IoT value chain. Using our secure and powerful cloud platform, we design and develop customizable, turnkey connected solutions for improving occupant comfort and optimizing building energy performance.

**Kizconnect® is the most comprehensive and “multi” solution on the market.** Multi-protocols, multi-brands, multi-devices, and multi-building... to connect residential new construction and renovated buildings in no time.

**From manufacturers to developers and service providers...** there is a Kizconnect® solution to help everyone to attract customers, gain partners, and add even more value in your market.



**11+ MILLION**  
CONNECTED  
DEVICES



**1+ MILLION**  
GATEWAYS ALREADY  
INSTALLED WORLDWIDE

# With Kizconnect<sup>®</sup>, all of Overkiz is at your fingertips

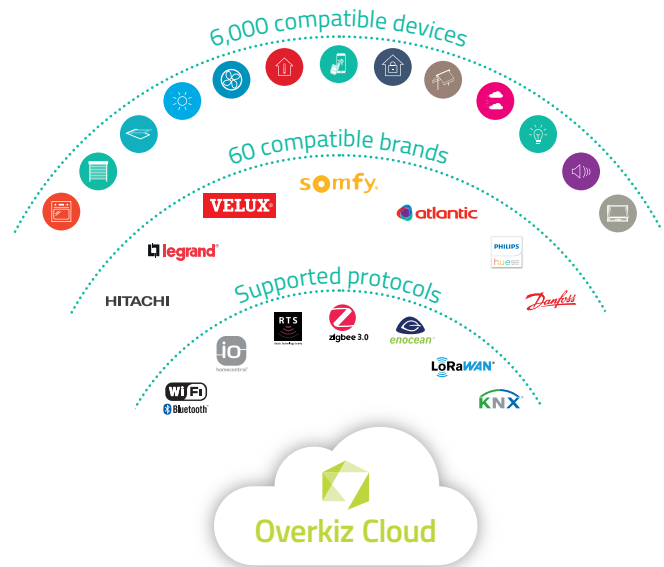
## A 100% open, scalable, and secure cloud platform

to ensure smart communications across a multitude of devices, along with secure data storage and management.

**The market's most comprehensive ecosystem** for maximum compatibility with a vast array of home and building devices.

## A la carte

using our cloud platform, where you can select, combine, and customize solutions tailored to your projects.



## OUR COMMITMENTS



### Expertise

developing hardware and software solutions for more than 15 years



### Security

maximum protection and end-to-end data privacy (ISO 27001 certification and GDPR compliance)



### Reliability

a robust infrastructure that is available 24/7 with 99.9% reliability



### Quality

proven processes from the Somfy Group, with each delivered product undergoing testing and qualification by a dedicated team

# Kizconnect®

Join the market's most comprehensive ecosystem!

# Kizconnect® DIN Rail

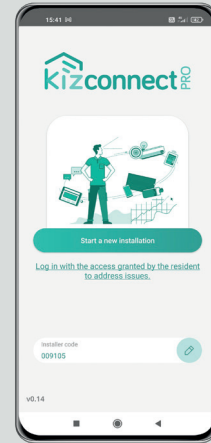
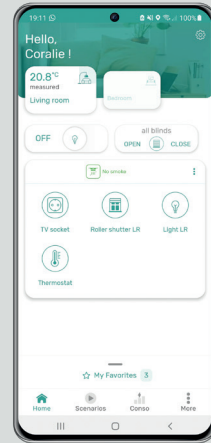
Connect homes and buildings in the blink of an eye

## Go to market quickly with your IoT project

Connect your products easily by allowing your customers to control their devices remotely. With just a few clicks, they can create scenarios with more than 60 compatible brands!

## Kizconnect® app

A turnkey app with your branding to save time and money.



## Kizconnect® Pro app

An app that makes installation easy, increasing productivity and service quality.



## Deploy innovative connected services

Usher your customers into the smart era! Collect your data, improve the energy performance of buildings, increase occupant comfort, and expand your circle of partners.

Discreet and elegant design

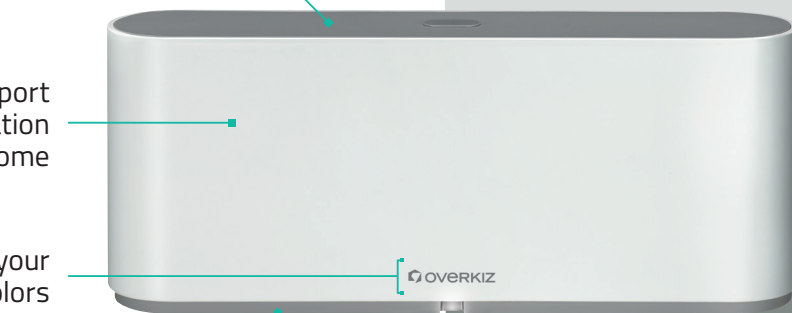
Wifi support for installation anywhere in the home

Customizable with your logo and colors

Multiple protocols



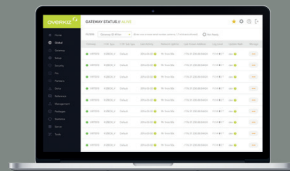
Optional USB dongle



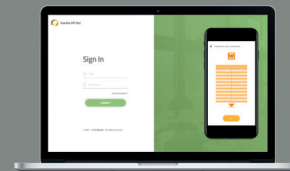
Overkiz Cloud

## More tools?

**E-Maintenance**  
Monitor and maintain your installed system remotely.



**API library**  
Develop your own mobile apps, interfaces, and added services.



Quick and easy integration with the electrical panel with the DIN Rail clip system

1-click wiring

Customizable with your logo

Direct access to the Reset and Prog buttons

Ultra-compact with only 7 DIN units

Multiple protocols



Optional modules

\*available soon



## About Overkiz

**Overkiz is a French company specializing in the design and development of white-label Smart Home and Smart Building solutions.**

Professionals: We are here to support you in your digital transformation! You can launch innovative connected services quickly and improve daily comfort, security, and quality of life for residents.

As part of the RE2020, Overkiz is here to help you optimize the energy performance of your buildings through innovative connected solutions and an unparalleled partner ecosystem.



A BRAND OF **SOMFY** GROUP

**Overkiz**  
2a rue du Pré Faucon  
74940 Anney  
France

✉ [sales@overkiz.com](mailto:sales@overkiz.com)

🌐 [www.overkiz.com](http://www.overkiz.com)