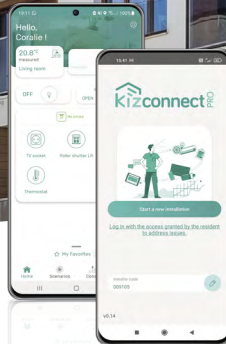


Kizconnect® ... and it all connects!

New connected solutions
Customizable
Multi-compatible
Scalable



With expertise in Smart Homes and Smart Buildings, Overkiz is an expert in the entire IoT value chain. Using our secure and powerful cloud platform, we design and develop customizable, turnkey connected solutions for improving occupant comfort and optimizing building energy performance.

In 2022, Overkiz went a step further with the launch of Kizconnect®, the market's most comprehensive, "multi" solution. Multi-protocols, multi-brands, multi-devices, and multi-building... to connect residential and non-residential new construction and renovated buildings in no time.

From manufacturers to developers and service providers... there is a Kizconnect® solution to help everyone to attract customers, gain partners, and add even more value in your market.



9+ MILLION
CONNECTED
DEVICES



800,000+
GATEWAYS ALREADY
INSTALLED WORLDWIDE

With Kizconnect®, all of Overkiz is at your fingertips

A 100% open, scalable, and secure cloud platform

to ensure smart communications across a multitude of devices, along with secure data storage and management.

The market's most comprehensive ecosystem for maximum compatibility with a vast array of home and building devices.

A la carte

using our cloud platform, where you can select, combine, and customize solutions tailored to your projects.



OUR COMMITMENTS



Expertise

developing hardware and software solutions for more than 15 years



Security

maximum protection and end-to-end data privacy (ISO 27001 certification and GDPR compliance)



Reliability

a robust infrastructure that is available 24/7 with 99.9% reliability



Quality

proven processes from the Somfy Group, with each delivered product undergoing testing and qualification by a dedicated team

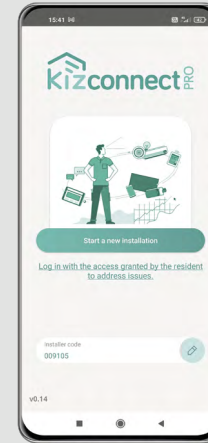
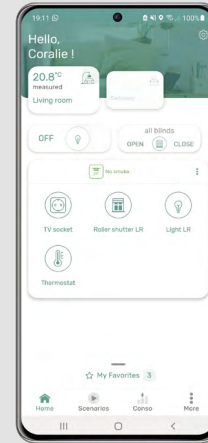
Kizconnect®

Join the market's most comprehensive ecosystem!

Go to market quickly with your IoT project

Connect your products easily by allowing your customers to control their devices remotely. With just a few clicks, they can create scenarios with more than 60 compatible brands!

Kizconnect® app
A turnkey app
with your branding
to save time and money.



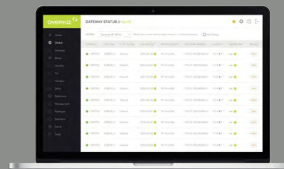
Kizconnect® Pro app
An app that makes installation
easy, increasing productivity
and service quality.



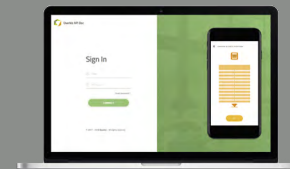
Overkiz Cloud

More tools?

E-Maintenance
Monitor and maintain
your installed
system remotely.



API library
Develop your own mobile
apps, interfaces,
and added services.



Kizconnect® DIN Rail

Connect homes and buildings in the blink of an eye

Deploy innovative connected services

Usher your customers into the smart era! Collect your data, improve the energy performance of buildings, increase occupant comfort, and expand your circle of partners.

Quick and easy integration
with the electrical panel
with the DIN Rail clip system

1-click wiring

Customizable
with your logo

Direct access to the
Reset and Prog buttons

Ultra-compact
with only 7 DIN units

Multiple protocols



Optional modules



*available soon

Discreet
and elegant design

Wifi support
for installation
anywhere in the home

Customizable with your
logo and colors

Multiple protocols



Optional USB dongle



About Overkiz

Overkiz is a French company specializing in the design and development of white-label Smart Home and Smart Building solutions.

Professionals: We are here to support you in your digital transformation! You can launch innovative connected services quickly and improve daily comfort, security, and quality of life for residents.

As part of the RE2020, Overkiz is here to help you optimize the energy performance of your buildings through innovative connected solutions and an unparalleled partner ecosystem.



A BRAND OF **SOMFY** GROUP

Overkiz

Immeuble Variation A
Allée de la Mandallaz
74370 Metz-Tessy - FRANCE

✉ [**sales@overkiz.com**](mailto:sales@overkiz.com)

🌐 [**www.overkiz.com**](http://www.overkiz.com)